

N 922 STAINLESS STEEL SERIES EXPLOSION PROOF PUMPS



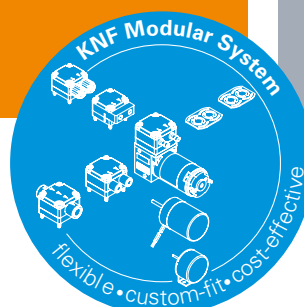
N 922 STE Ex

ADVANTAGES

- Motor approved in accordance with ATEX/IECEX
- High level of gas tightness: 6×10^{-3} mbar x l/s according to type examination
- Durable even with difficult operating conditions
- Compressor housing can be turned in 90° intervals as required

POSSIBLE AREAS OF USE

- Environmental monitoring
- Process industry
- Chemical industry



Please visit our website
www.knf.com
to get more information

PERFORMANCE DATA

Series model	N 922 - 50 Hz Version		N 922 - 60 Hz Version	
Material design	STE Ex			
Pump head	Stainless steel			
Diaphragm	PTFE-coated			
Valves	Stainless steel			
Flow rate at atm. pressure (l/min)	20.0 ± 10 %		23.0 ± 10 %	
Ultimate vacuum (mbar abs.)	110			
Max. operating pressure (bar rel./psig)	2.5/36.3			
Permissible ambient temperature (°C)	+5 ... +50			
Permissible media temperature (°C)	+5 ... +50			
Weight (kg/lbs)	8.6/19.0			

ELECTRICAL DATA

Voltage (V)	230	100	220	230/400
Motor	Capacitor motor			Three-phase motor
Protection class motor	IP 66			
Protection class pump	IP 54			
Frequency (Hz)	50	50/60	60	50/60
Power P ₂ (W)	120			
I _{max} (A), 50 Hz	1.09	2.28	-	0.76/0.44
I _{max} (A), 60 Hz	-	2.26	1.06	0.76/0.44
Explosion protection pump parts	Ex II 2/2G Ex h IIB+H2 T3 Gb			
Explosion protection motor	Ex II 2G Ex de IIC T4			

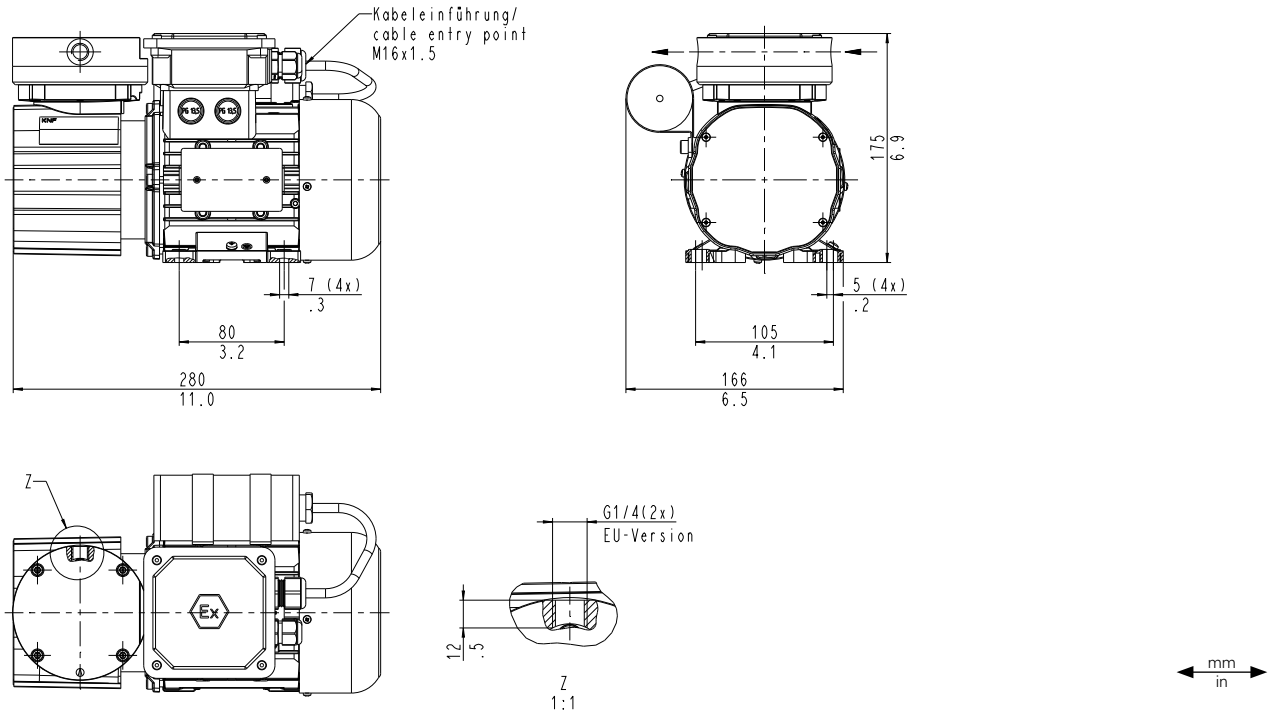
N 922 STE EX | CAPACITOR MOTOR

PERFORMANCE DATA

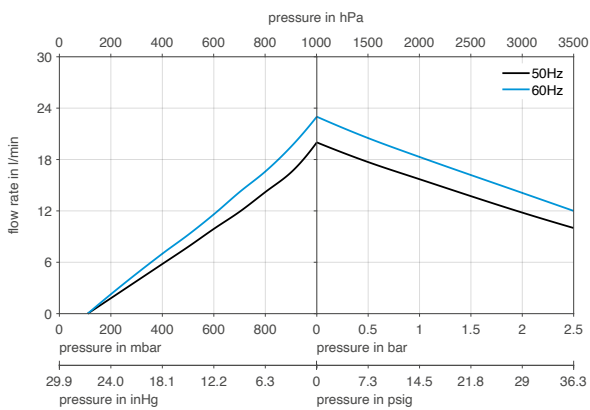
Series model	Flow rate at atm. pressure (l/min)	Max. operating pressure (bar rel./psig)	Ultimate vacuum (mbar abs.)
N 922 STE Ex - 50 Hz	20.0 ± 10 %	2.5/36.3	110
N 922 STE Ex - 60 Hz	23.0 ± 10 %	2.5/36.3	110

Flow rate determined at 20 °C, 1013 mbar abs.
(Pressure 0 to 1013 mbar abs. in accordance with ISO 21360-1/2)

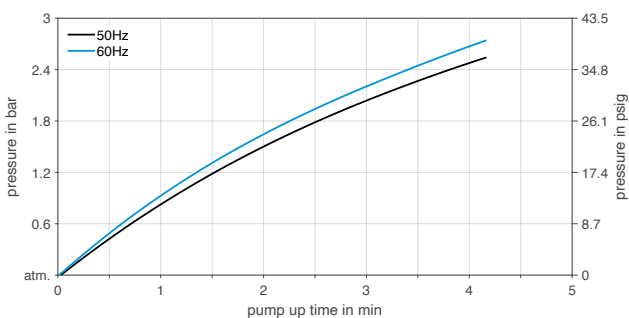
N 922 STE EX



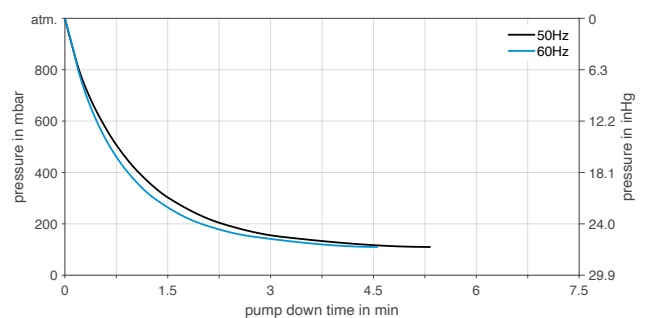
N 922 STE EX



N 922 STE EX | PUMP UP TIME FOR 20 LITER VESSEL



N 922 STE EX | PUMP DOWN TIME FOR 20 LITER VESSEL



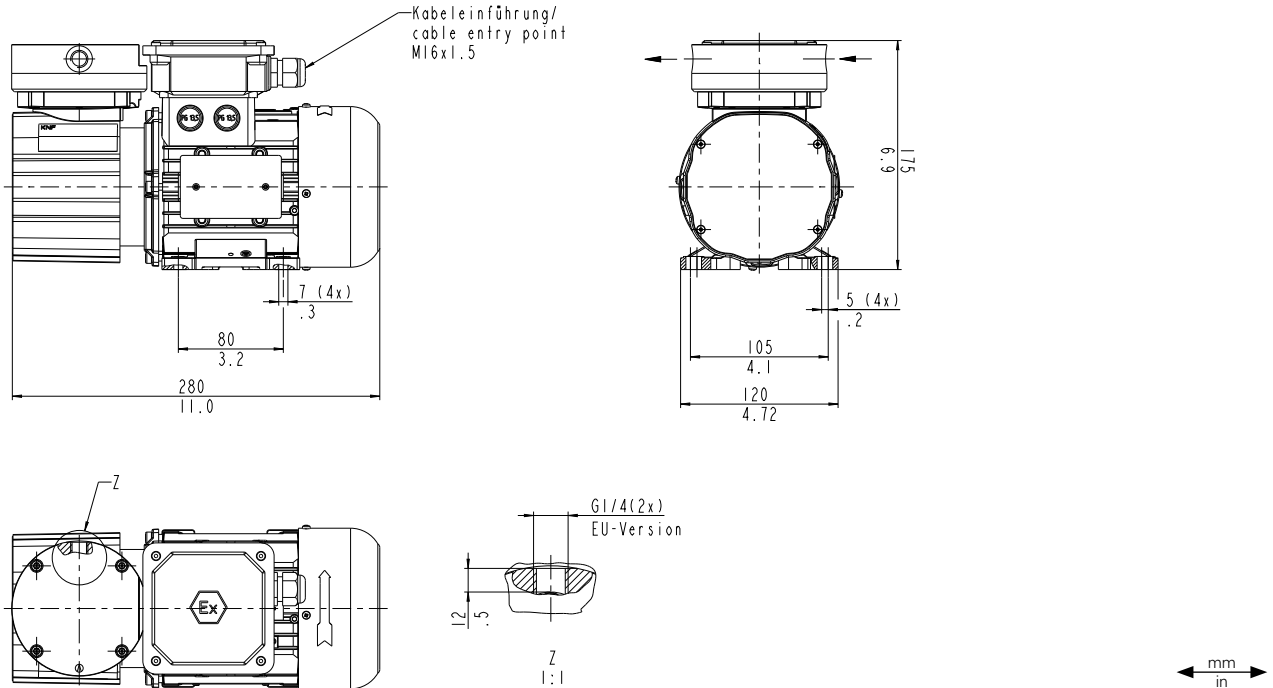
N 922 STE EX | THREE-PHASE MOTOR

PERFORMANCE DATA

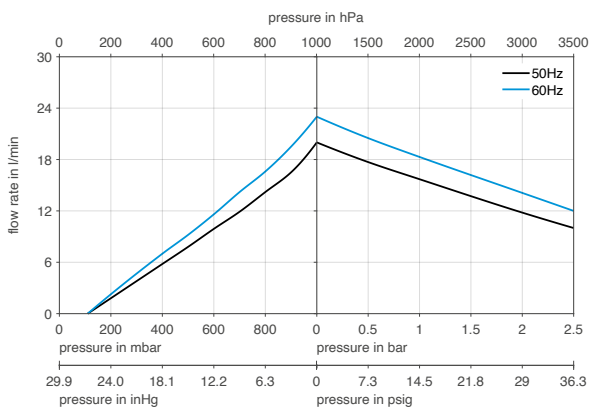
Series model	Flow rate at atm. pressure (l/min)	Max. operating pressure (bar rel./psig)	Ultimate vacuum (mbar abs.)
N 922 STE Ex - 50 Hz	20.0 ± 10 %	2.5/36.3	110
N 922 STE Ex - 60 Hz	23.0 ± 10 %	2.5/36.3	110

Flow rate determined at 20 °C, 1013 mbar abs.
 (Pressure 0 to 1013 mbar abs. in accordance with ISO 21360-1/2)

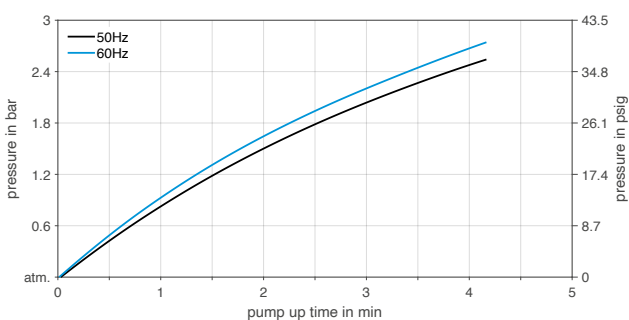
N 922 STE EX



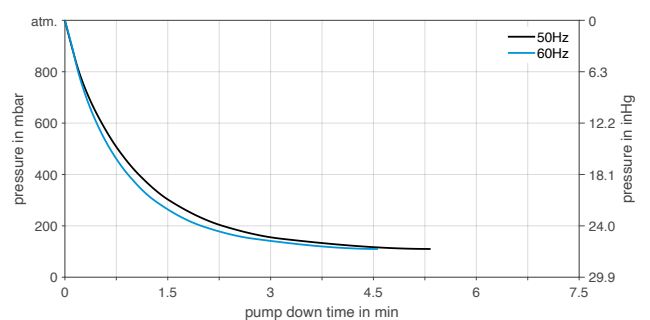
N 922 STE EX



N 922 STE EX | PUMP UP TIME FOR 20 LITER VESSEL



N 922 STE EX | PUMP DOWN TIME FOR 20 LITER VESSEL



ACCESSORIES

Description	Illustration	Part No.	Details
Straight compression fitting OD 10		317086	Stainless steel, G 1/4
Elbow compression fitting OD 10		318946	Stainless steel, G 1/4
Mounting kit shock mounts		313180	
Mounting kit shock mounts and mounting bracket		313181	

SPARE PARTS

Description	Part No.
Spare parts kit N 922 STE Ex	328447

The performance values for the series models shown on this data sheet were determined under test conditions. The actual performance values may differ and depend in particular on the usage conditions and therefore on the specific application, on the parameters of the components involved in the user's system and on any technical modifications carried out which deviate from the standard configuration or the as delivered condition.

If individual designs have been created for specific customers on the basis of series models, other technical performance data may apply. Before operation begins, the relevant operating instructions and/or assembly or installation instructions should be read and the safety information contained in these instructions should be noted. KNF reserves the right to make changes to the product and the associated documentation without prior notice to the customer.



www.knf.com